



**cogta**

Department:  
Cooperative Governance and Traditional Affairs  
PROVINCE OF KWAZULU-NATAL



# UPDATE ON PROGRESS WITH THE KZN PROVINCIAL SPATIAL DEVELOPMENT FRAMEWORK

PRESENTATION TO THE PGDP TECHNICAL COMMITTEE MEETING

31 MAY 2018



cogta

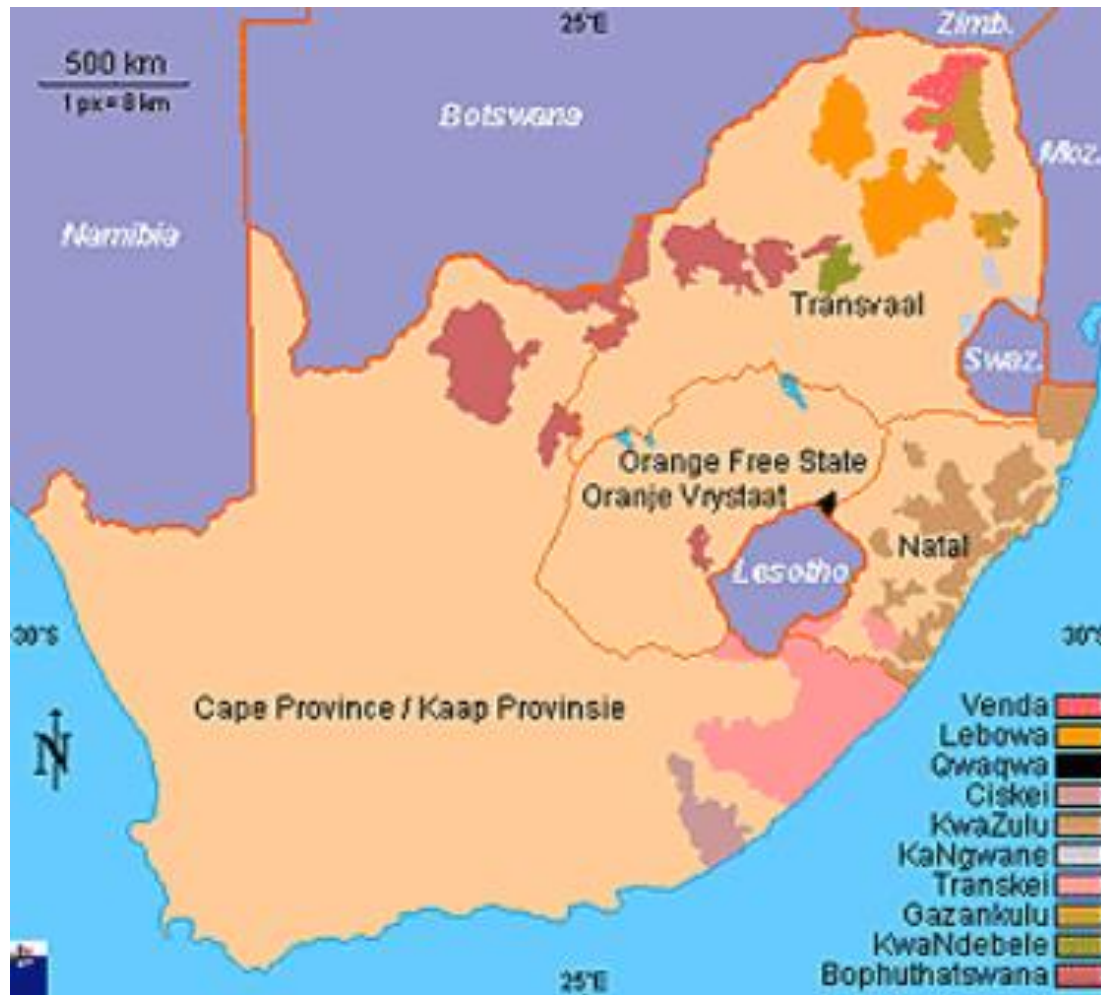
Department:  
Cooperative Governance and Traditional Affairs  
PROVINCE OF KWAZULU-NATAL

# PRESENTATION OUTLINE

1. THE *STATUS QUO*
2. THE MUCH MISUNDERSTOOD  
SPLUMA
3. PROVINCIAL SPATIAL DEVELOPMENT  
FRAMEWORK STATUS
4. STAKEHOLDER ENGAGEMENTS

# THE STATUS QUO

## INEQUITABLE ACCESS

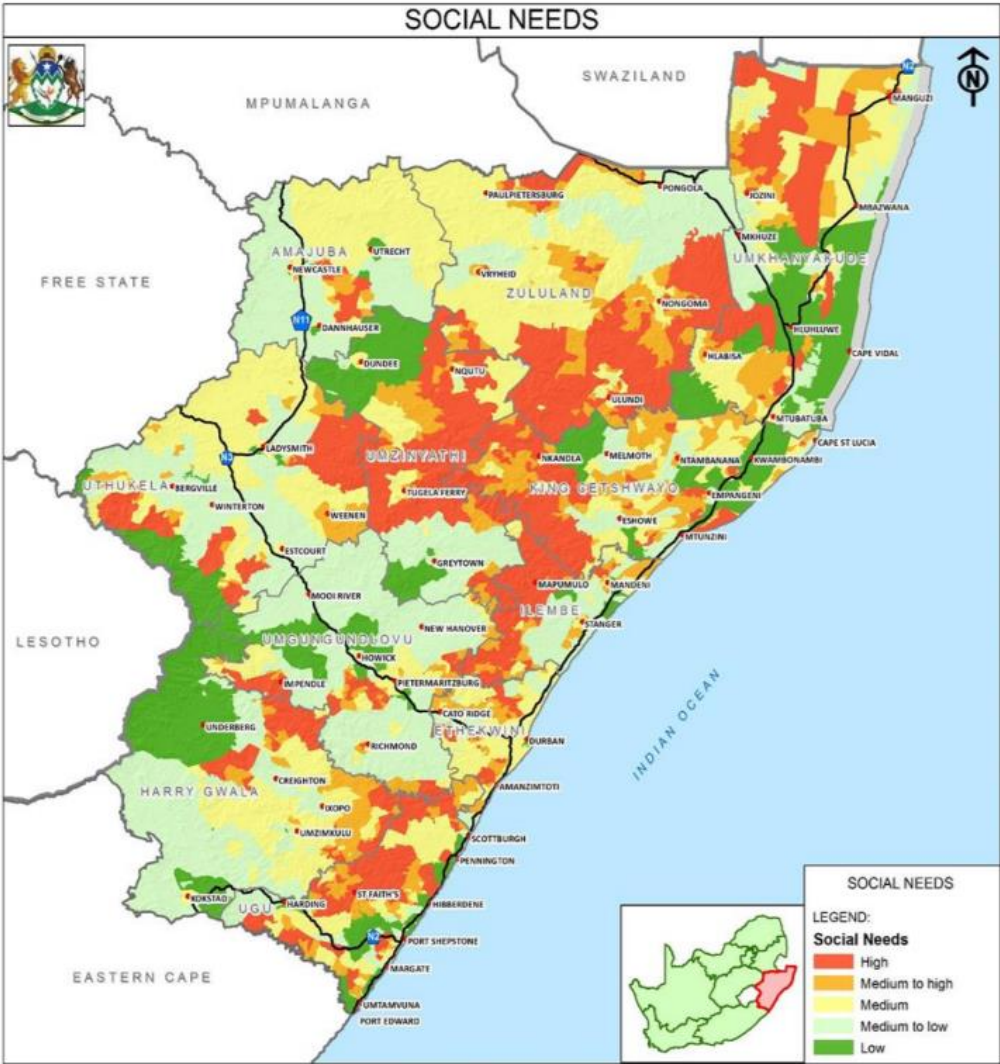


## INEQUITABLE DEVELOPMENT THE HISTORIC LEGACY OF DEVELOPMENT IN SOUTH AFRICA

The Bantustans or homelands, established by the Apartheid Government, were areas to which the majority of the Blacks population was moved to prevent them from living in the urban areas of South Africa. The Bantustans were a major administrative mechanism for the removal of Blacks from the South African political system under the many laws and policies created by Apartheid.

(Source: <http://www.sahistory.org.za>)

**THE STATUS QUO**  
**INEQUITABLE ACCESS**





## Long Commutes & Congestion



Source: [www.wheel24.com](http://www.wheel24.com)

## Overburdening of accessible facilities and long queues



Source: <http://www.iol.co.za>

## Areas of informality adjacent to accessible and serviced areas



Source: <https://publiceyemaritzburg.co.za>

## High Unemployment



Source: <http://www.youthvillage.co.za>

## Social Unrest & Protests



Source: <http://www.iol.co.za>

# THE RESULTS OF NO SPATIAL EQUITY



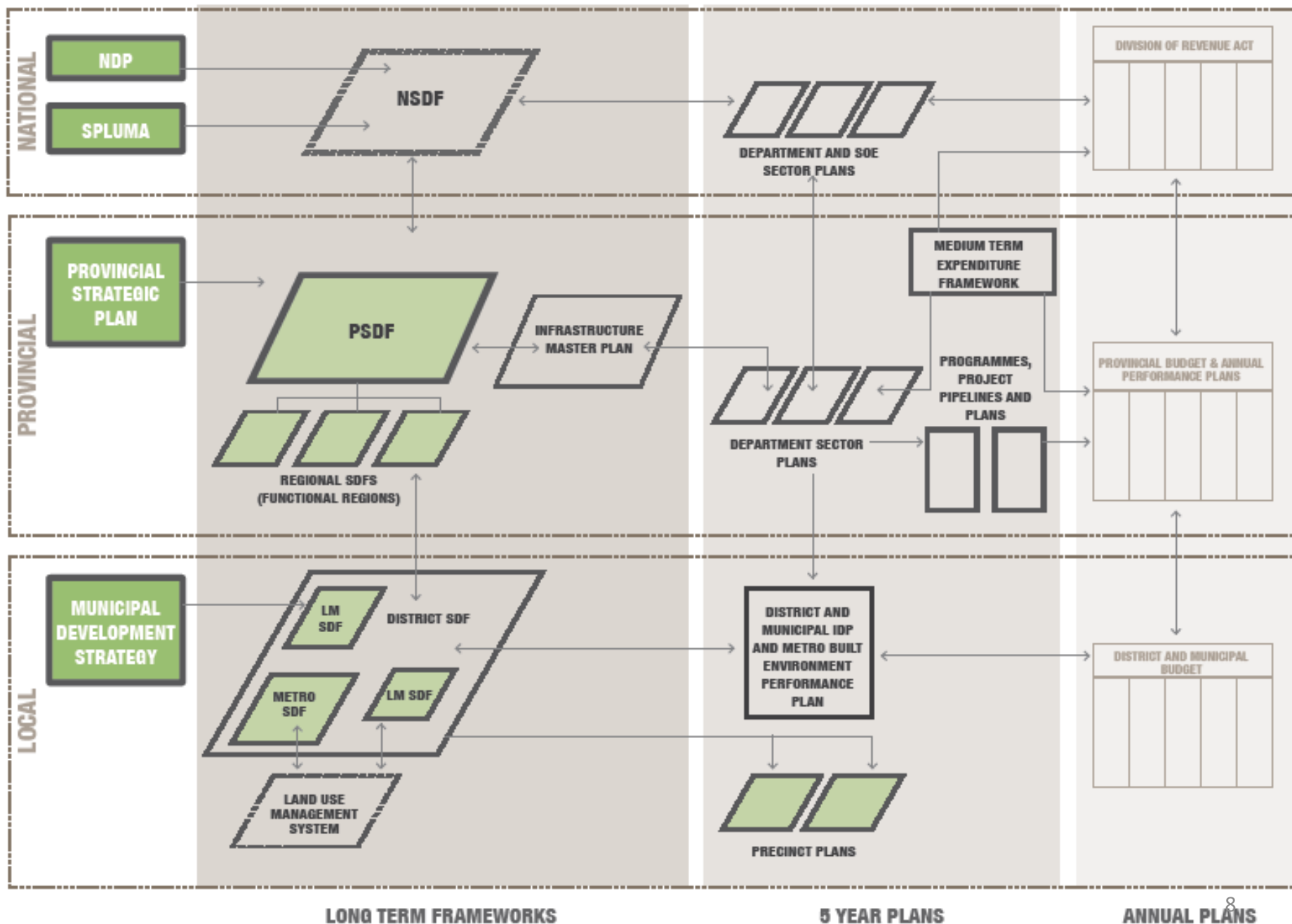


Source: <http://www.dispatchlive.co.za>

## **THE MUCH MISUNDERSTOOD SPATIAL PLANNING AND LAND USE MANAGEMENT ACT**

- **SPLUMA concretises the planning arena** within the country for all spheres of government.
- It **requires all three spheres** of government to prepare Spatial Development Frameworks.
- It **ensures alignment across the three spheres** and clearly spells out the content and objectives of each of the plans.
- It **ensures long- term plans** are prepared that are **linked to budgets**.

# CONSTITUTIONAL PRINCIPLES

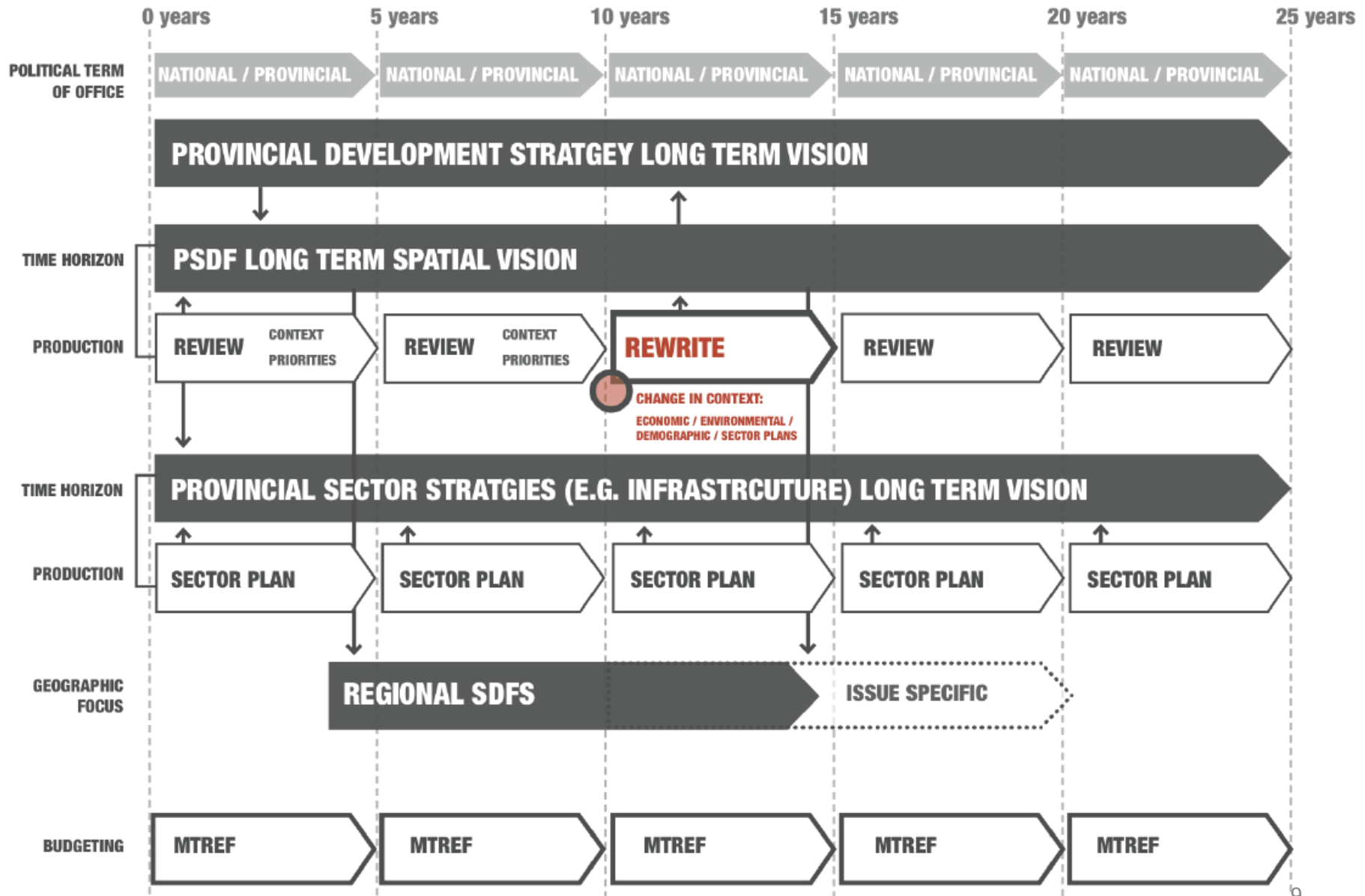


LONG TERM FRAMEWORKS

5 YEAR PLANS

ANNUAL PLANS





## THE PROVINCIAL SPATIAL DEVELOPMENT FRAMEWORK STATUS

- The PSDF was prepared by the KZN Office of the Premier and adopted in 2016, but is not SPLUMA compliant.
- The KZN Provincial Executive Council tasked KZN COGTA with the preparation of the PSDF at the August 2017 Lekgotla.

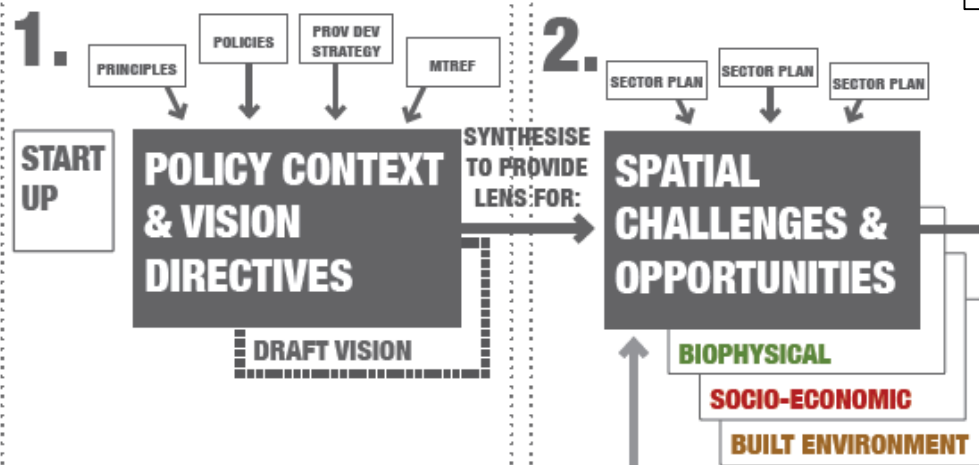


## THE PROVINCIAL SPATIAL DEVELOPMENT FRAMEWORK STATUS

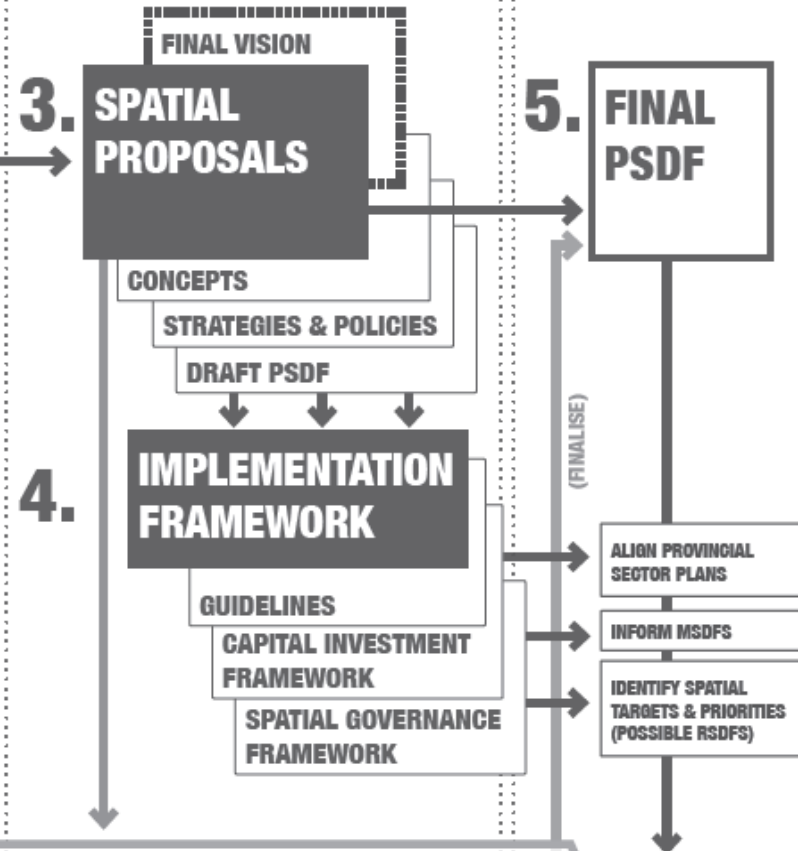
- PSDF is currently under review with the following actions have been undertaken thus far:
  - Engagements with sector departments and entities to **identify GIS coverages available and supporting reports.**
  - Engagements with Sector Departments to **understand their norms and standards** regarding infrastructure delivery in the Province.
  - An assessment of Government **expenditure and its alignment with the PGDS.**
  - An **assessment of the 14 Departmental Strategic Plans.**
  - Engagements **National government** and participation in the formulation of the National SDF.
  - Engagements with **municipalities** to brief them on the PSDF review process.
  - The preparation of a **participation plan.**



## PSDF PROCESS:



## NEW PSDF PROCESS



## STAKEHOLDER ENGAGEMENT:



## MONITORING & EVALUATION:

**ME1 BASELINE REVIEW:**  
PREVIOUS SDF TARGETS VS.  
SPATIAL PLANNING OUTCOMES

**ME2 TARGET DETERMINATION:**  
GATHER UPDATED CENSUS DATA &  
OTHER RELEVANT, MEASURABLE DATA

**ME3 TARGET ESTABLISHMENT:**  
INDICATORS & TARGETS  
BASED ON SPATIAL  
STRATEGIES

**ME4 TARGET ALIGNMENT:**  
POLICIES, GUIDELINES &  
INSTITUTIONAL TARGETS

**ME5 MONITORING  
AND REVIEW**



cogta

Department:  
Cooperative Governance and Traditional Affairs  
PROVINCE OF KWAZULU-NATAL

#### STRATEGIC GOALS

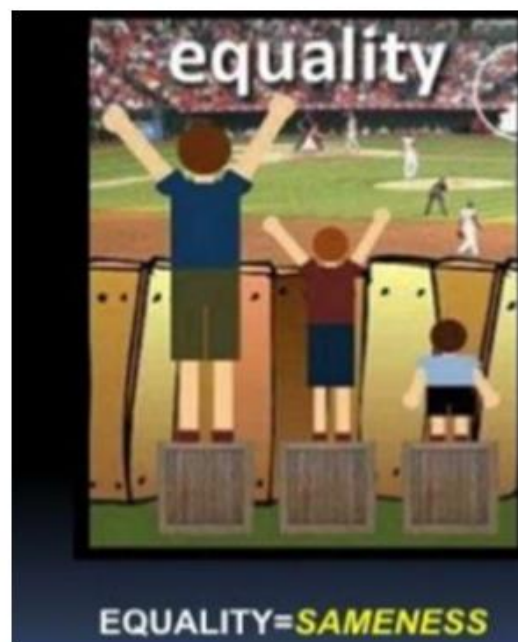
- 1** INCLUSIVE ECONOMIC GROWTH
- 2** HUMAN RESOURCE DEVELOPMENT
- 3** HUMAN AND COMMUNITY DEVELOPMENT
- 4** STRATEGIC INFRASTRUCTURE
- 5** ENVIRONMENTAL SUSTAINABILITY
- 6** GOVERNANCE AND POLICY
- 7** SPATIAL EQUITY

## VISION 2035

KwaZulu-Natal will be a prosperous Province with a healthy, secure and skilled population, living in dignity and harmony, acting as a gateway to Africa and the World



# WHAT IS SPATIAL EQUITY?





# SPATIAL EQUITY

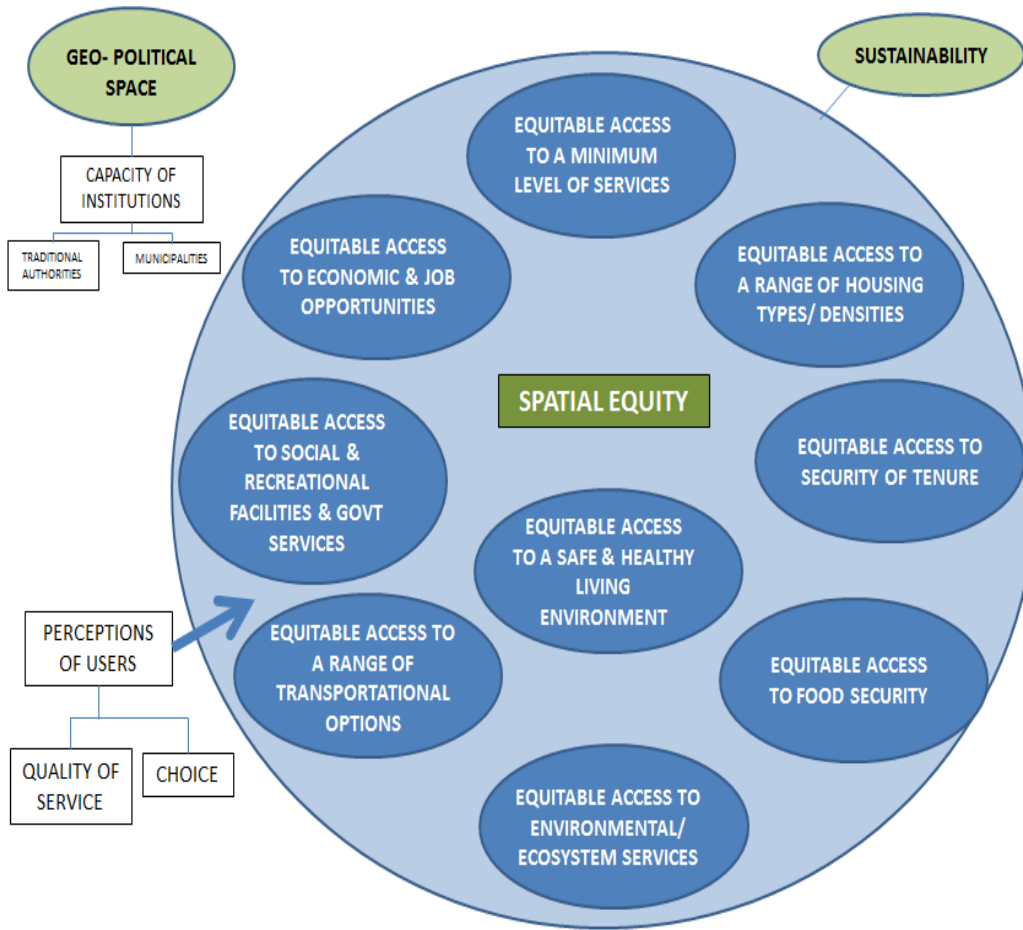


Focus on growing the areas of highest growth potential and leverage private sector investment.



cogta

Department:  
Cooperative Governance and Traditional Affairs  
PROVINCE OF KWAZULU-NATAL



# SPATIAL EQUITY

- **9 key areas** affecting spatial equity have been identified as per the diagram.
- The **use and utilisation of services/ facilities** is impacted upon by the **perceptions** of the users/ community on the quality of the services they are receiving, and **choices** available to them.
- All 9 elements of spatial equity **happen in a geopolitical space**, both municipalities and traditional authorities.
- All of the above happen, impact and are dependent on the **natural environment**.



# CONCEPT OF SPATIAL EQUITY NORMS AND STANDARDS FRAMEWORK: UNIFORM CLASSIFICATION OF SPACES FOR IMPROVED EQUITABLE ACCESS TO SERVICES IN THE PROVINCE

GROENVLEI



GLENWOOD



WESTVILLE

UMHLANGA



NONGOMA



Deep Rural

Rural Settlements

Small Holdings

Outer Suburbs

Inner Suburbs

Inner Suburbs

Outer Suburbs

Peri-Urban

Townships

OSIZWENI



CENTRAL BUSINESS DISTRICT



DURBAN CBD



ASHBURTON



UMBUMBULU

# CONCEPT OF ALIGNING SPATIAL EQUITY NORMS AND STANDARDS - WITH THE LEVEL OF SERVICES (LOS) IN TERMS OF THE PROVINCIAL INFRASTRUCTURE MASTER PLAN: THE EXAMPLE OF HUMAN SETTLEMENT PROVISION

## National Housing Infrastructure Norms and Standards

Subsidized infrastructure  
Norms and Standards

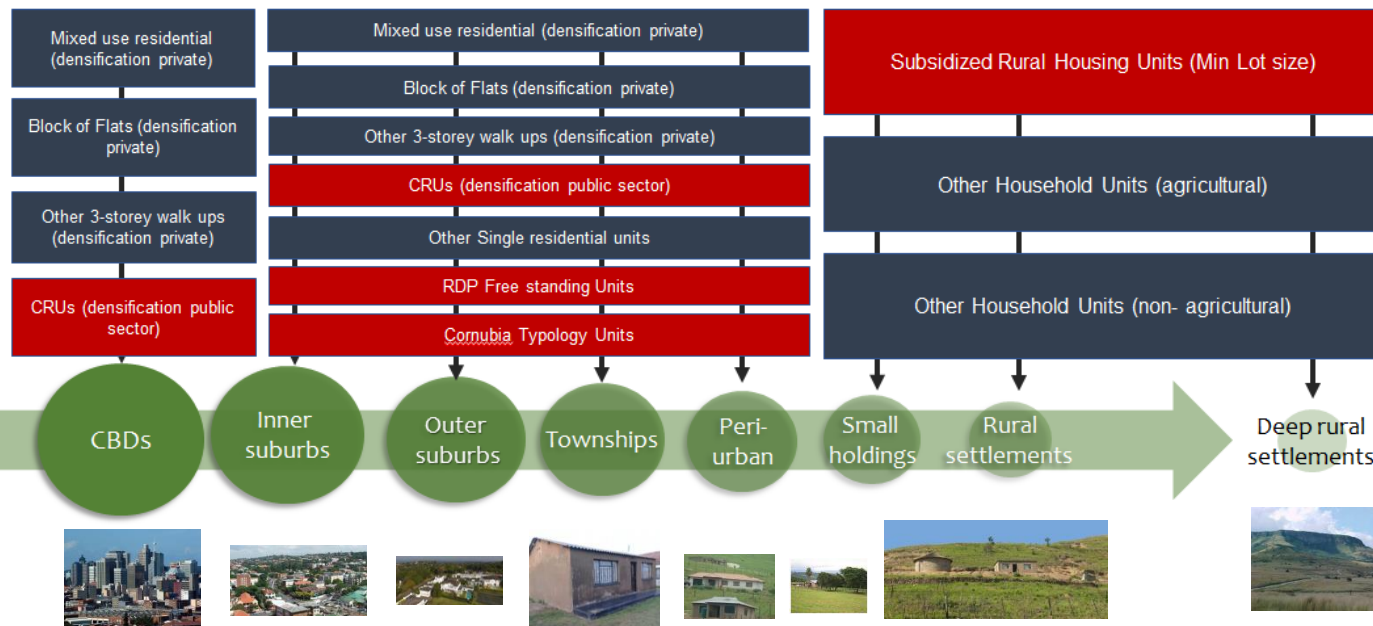
Private infrastructure norms  
and standards

National  
policy &  
strategy  
framework

KZN policy  
& strategy  
framework

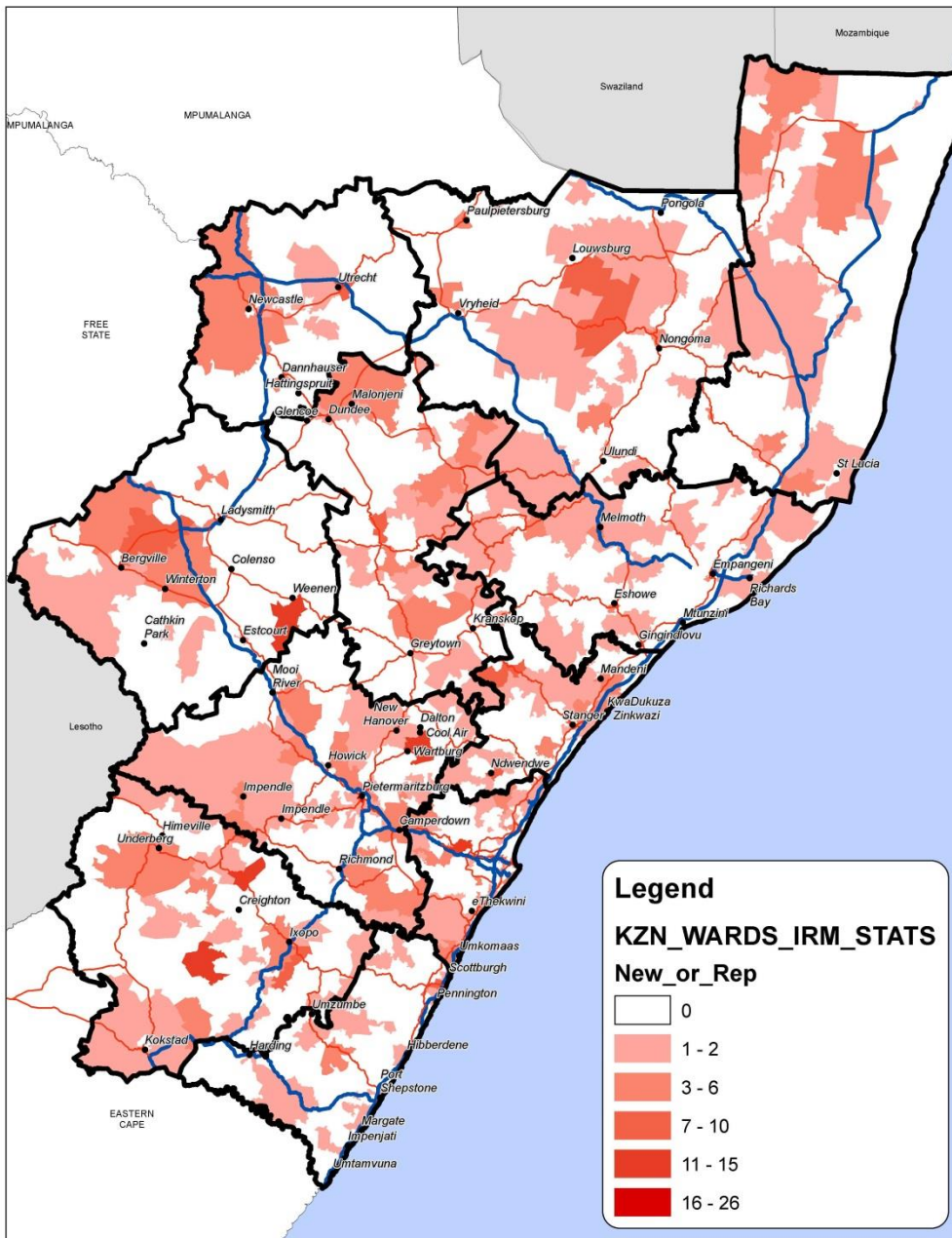
Local Govt.  
policy &  
strategy  
framework

## KZN HOUSING TYPOLOGIES & *Level of Service framework (LOS)*



## CONCEPT OF ALIGNING SPATIAL EQUITY NORMS AND STANDARDS - SPATIAL BUDGETING AND SPEND

- Through close workings with the Department of Public Works and the Provincial Infrastructure Master Plan, greater integration is occurring between spatial budgeting and spend.
- It is now possible to provide, through the IRM processes, spend by Department down to a lat- long level. Exceptions are DARD and DHS but this is being addressed.
- The system is maturing with the incorporating of SOEs data.
- MIG project alignment.



**TOTAL DEPARTMENTAL SPEND:  
 NUMBER OF PROJECTS PER  
 DISTRICT MUNICIPALITY**

**NEW OR REPLACEMENT**

**MAP BASED ON IN- YEAR  
 REPORTS FOR 2017/18 AT THE  
 END OF MARCH.**

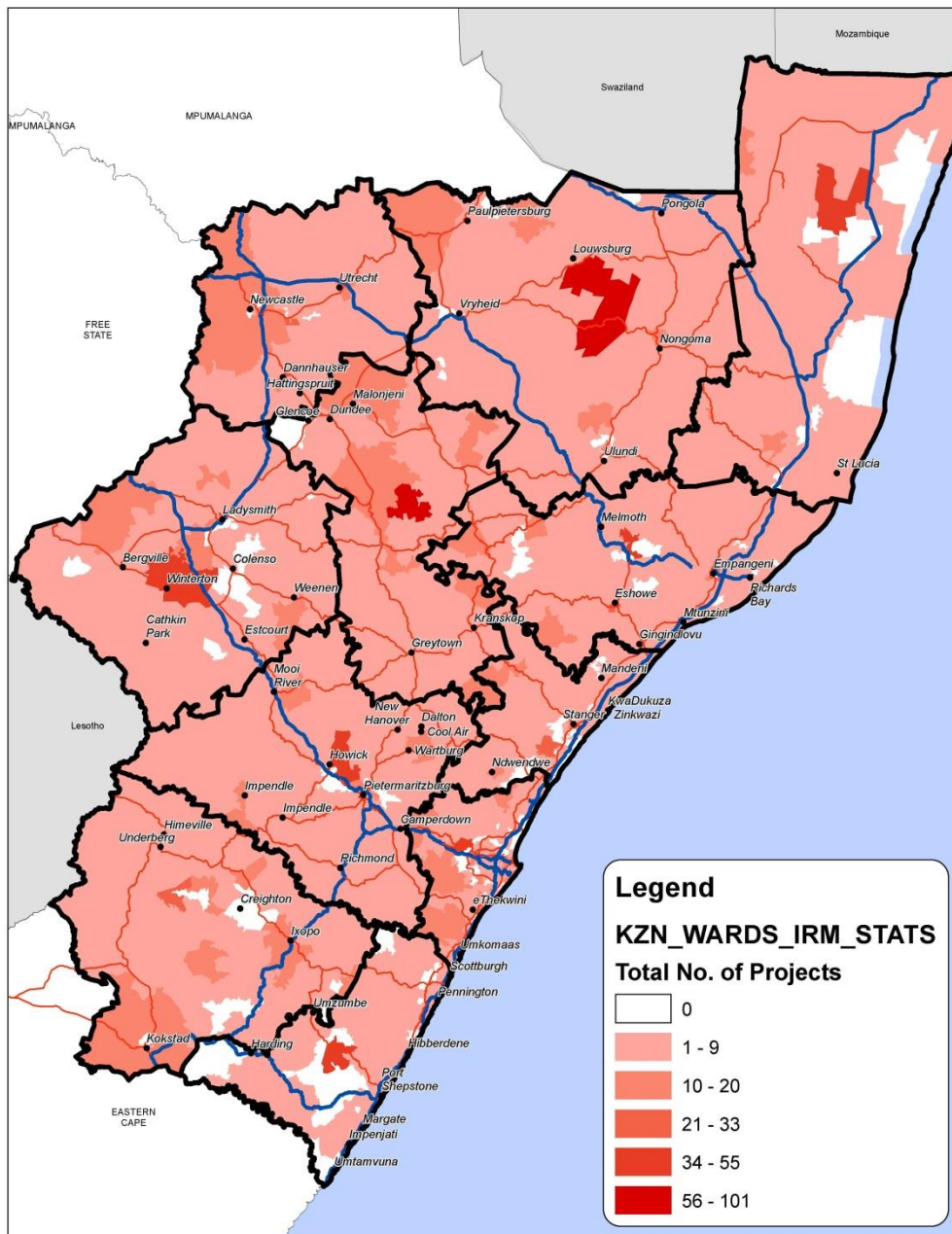
**WARD LEVEL**

**BACK TO BASICS: SERVING OUR COMMUNITIES BETTER**



<b>Legend</b> ● PlaceNames_2011 Prov_Rd_Network_04Oct2013 <b>Class</b> 1 2	Data Source: Municipal Boundaries - Demarcation Board (2016) Roads - KZN DoT (2016) Wards - Demarcation Board Note:	<b>CLIENT:</b>  PROVINCE OF KWAZULU-NATAL REPUBLIC OF SOUTH AFRICA	<b>PROJECT:</b> KWAZULU-NATAL PROVINCIAL INFRASTRUCTURE MASTER PLAN <b>DRAWING DESCRIPTION:</b> 000 NO. OF NEW OR REPLACEMENT PROJECTS PER WARD DRAWING No: KZN/IMP-21-07-17 <b>DATE CREATED:</b> 04-Oct-17 <b>PAPER SIZE:</b> A3 <b>DRAWN:</b> SCOBANI CEZA <b>CHECKED:</b> TRIVI ANJUNAI Date Saved: 03-Oct-17 03:11 PM
---	---	--	--





**TOTAL DEPARTMENTAL SPEND:  
 NUMBER OF PROJECTS PER  
 DISTRICT MUNICIPALITY**

**TOTAL NUMBER OF PROJECTS**

**MAP BASED ON IN- YEAR  
 REPORTS FOR 2017/18 AT THE  
 END OF MARCH.**

**WARD LEVEL**

**BACK TO BASICS: SERVING OUR COMMUNITIES BETTER**



<b>Legend</b> PlaceNames_2011 Prov_Rd_Network_04Oct2013 <b>Class</b> 1 2	Data Source: Municipal Boundaries - Demarcation Board (2016) Roads - KZN DoT (2016) Water - Demarcation Board Note:	<b>CLIENT:</b>  PROVINCE OF KWAZULU-NATAL ISIPUNDAZE BASWALUKU-NATALI	<b>PROJECT:</b> KWAZULU-NATAL PROVINCIAL INFRASTRUCTURE MASTER PLAN DRAWING DESCRIPTION: IRM TOTAL NO. OF PROJECTS PER WARD DRAWING No: KZN-IRM-21-07-17 DATE CREATED: 04-Oct-17 PAPER SIZE: A3 DRAWN: SCOBANI CEZA CHECKED: TRIVIA ARJUNANI Date Saved: 03-Oct-17 0:05:11 PM
---	---	---	--

## STAKEHOLDER ENGAGEMENTS

- **Action Work Group 18** is the PSC. Additional stakeholders identified and letters being written by the Secretariat.
- Started **Sector Department engagements** in January 2018 around the accessing of GIS data and understanding what plans have been undertaken.
- Currently **reviewing all provincial department strategic plans**.
- Currently **analysing provincial and municipal spending** in the 2016/17 financial year to see alignment to the PGDS.
- Currently engaging with Sector Departments with DPW to understand **sector norms and standards**.
- Engaging with all **DM family of municipalities** around the PSDF review.
- Participation Plan prepared and being presented to the KZN **Provincial Planning Commission in early July 2018**.

STEPS		DELIVERABLES	TIMEFRAME	ROLE PLAYERS
SE1.1	Identify interested and affected parties. Initial engagements.	Database of stakeholders	October-December 2017	COGTA: SP
SE1.2	Notification of Stakeholders.	Sector Department and Municipal Presentations	January – June 2018	COGTA: SP
SE1.3	PSDF PSC Confirmed	Action Work Group 18. Standing item on the Agenda.	April 2018	COGTA: SP
SE1.4	PSDF Technical Work Groups	Three thematic groups identified: * BIOPHYSICAL * SOCIO- ECONOMIC * BUILT ENVIRONMENT	June - July 2018	COGTA: SP
SE1.5	Presentation to the Provincial Planning Commission	Endorsed Participation Plan	July 2018.	OTP

STEPS		DELIVERABLES	TIMEFRAME	ROLE PLAYERS
SE2.1	PSC Input	Policy context and vision directives to be presented to the PSC for review and inputs.	July 2018	AWG18
SE2.2	Technical Work Group Input	Technical work groups to be engaged on spatial challenges and opportunities.	July to August 2018	COGTA: SP
SE2.3	I&AP Input	Consultation with key stakeholders on spatial challenges and opportunities.	July to August 2018	COGTA: SP
SE2.4	Presentation to the Provincial Planning Commission	Workshopping on spatial challenges and opportunities.	August 2018.	OTP

STEPS		DELIVERABLES	TIMEFRAME	ROLE PLAYERS
SE3.1	PSC Input	Formulation of spatial concepts and strategies, authorise advertising of the draft PSDF report for public review.	August 2018	AWG18
SE3.2	Technical Work Group Input	Inputs in to the PSDF's vision, concepts and strategies, and Vision	August-September 2018	COGTA: SP
SE3.3	Provincial Departmental Input	Engagements with Sector Departments through AWG's.	August-September 2018	COGTA: SP
SE3.4	I&AP Input	Municipal Engagements. Other I&AP Engagements.	August-December 2018	COGTA: SP
SE3.5	Presentation to the Provincial Planning Commission	Confirmation of the spatial concepts and strategies	December 2018.	OTP

STEPS		DELIVERABLES	TIMEFRAME	ROLE PLAYERS
SE4.1	Consultations with other Provinces.	Engagements with other provinces.	December 2018 to March 2019	COGTA: SP
SE4.2	Consultation with other countries.	Engagements with other countries.	December 2018 to March 2019	COGTA: SP
SE4.3	Municipal Inputs	Engagements with municipalities.	December 2018 to March 2019	COGTA: SP
SE4.4	Presentation to Cabinet	Draft presented at Lekgotla.	February 2019	COGTA: MEC
SE4.5	Advertisement for Public inputs.	Public consultation process.	March 2019	COGTA: SP
SE4.6	Presentation to the Provincial Planning Commission	Inputs from the PPC.	May 2019	COGTA: SP
SE4.7	PSC Endorsement	Record of endorsement.	June 2019	COGTA: SP
SE4.8	Executive approval and notification.	Cabinet endorses the Premier's or MEC's	July – August 2019	OTP





cogta

Department:  
Cooperative Governance and Traditional Affairs  
PROVINCE OF KWAZULU-NATAL

**IF YOU DO WHAT YOU'VE  
ALWAYS DONE  
YOU'LL GET WHAT YOU'VE  
ALWAYS GOTTEN.**

Anthony Robbins

life-desires.com

**A MISTAKE  
REPEATED  
MORE THAN  
ONCE IS  
A DECISION.**

BACK TO BASICS: SERVING OUR COMMUNITIES BETTER

**B4B**



cogta

Department:  
Cooperative Governance and Traditional Affairs  
PROVINCE OF KWAZULU-NATAL

# THANK YOU